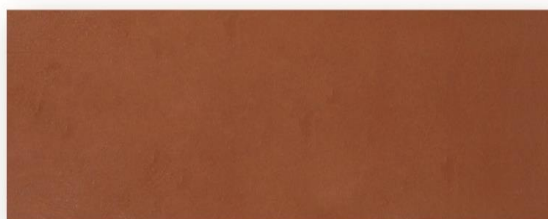


EXP2
980 - 1050 °C


Red earthenware body for fast firing cycles. Excellent drying behaviour, also with glazes and underglazes.
Intended for industrial ceramics and packaging.

Technical data sheet

Drying			Firing		
Humidity	Shrinkage	°C	l. weight	Water Absorption	Contracción
19%		1020°C	8,60%	12,76%	0,55%

Thermal coefficient

31.81 x10⁻⁷°C⁻¹ (48.1-400°C)