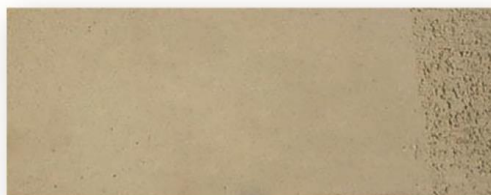


**GBR CH 0-1,5 mm****1280 - 1300 °C**

White refractory stoneware high fire grogged 0-1,5 mm.  
Nice texture. Excellent for lathe, modeling and raku.  
Perfect for professionals and amateurs

***Technical data sheet***

Drying		Firing			
Humidity	Shrinkage	°C	l. weight	Water Absorption	Contracción
22%	6,00%	1280	5,96%		12,00%

***Thermal coefficient***